



EA80 Indoor Air Quality Meter Datalogger

Software Manual

Software Requirements and Setup

Start up windows 95 / 98 / 2000 / XP operating system

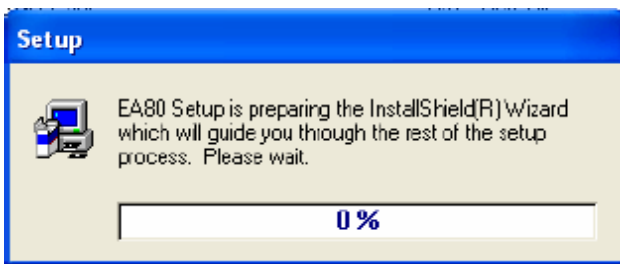
Close all other applications

Insert disk in CD drive

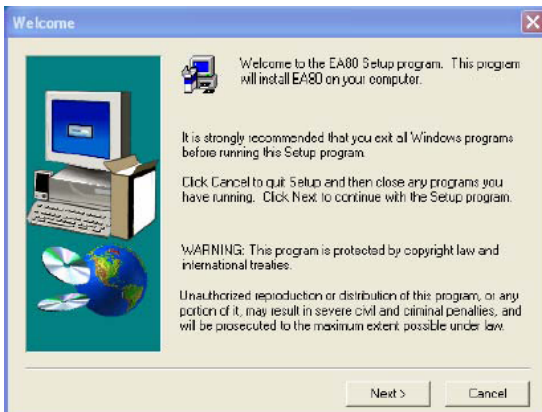
Wait for "Autorun" to start and follow the on-screen instructions

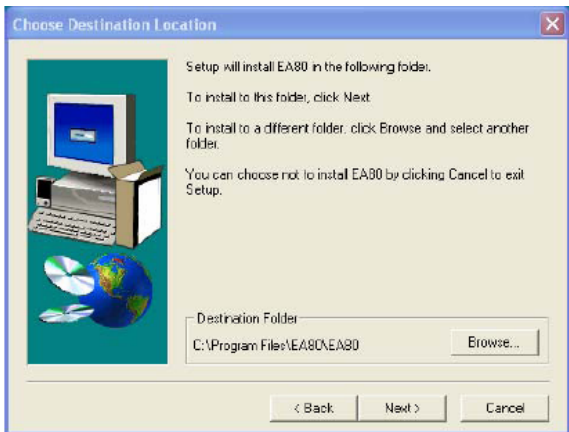
(If "autorun" does not start, click on "Start" then "Run". Type the drive letter and ":\Disk1\Setup.exe" and click "OK" .)

Setup program will run automatically.

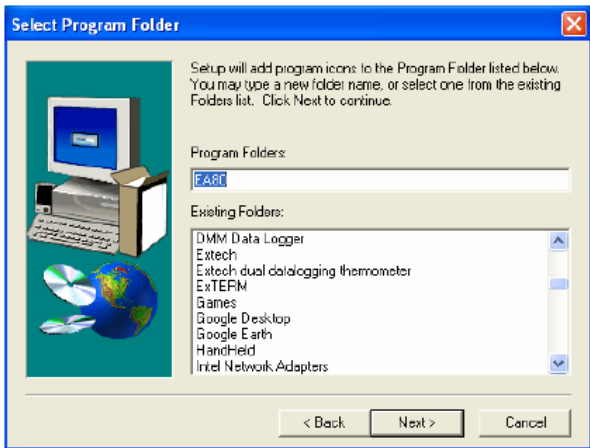


Click Next> button





Click Next> to use the default folder or
Click Browse... to select a different folder



Click Next> button

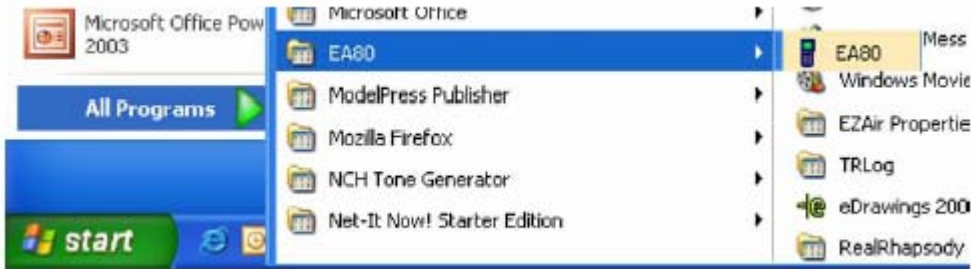


Setup is complete.

Software Operation

Run the software

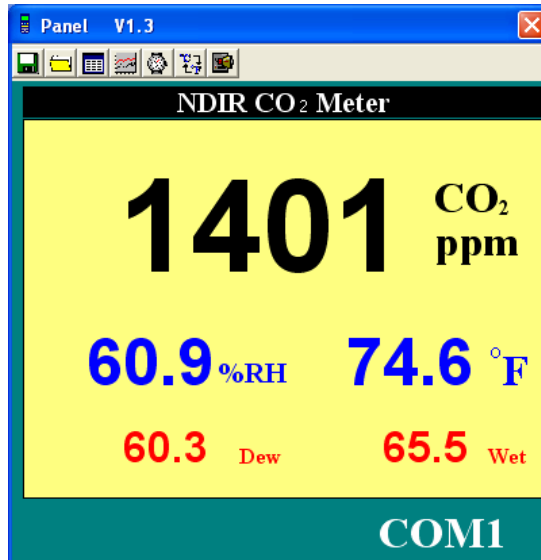
Click "Start" from Start menu then move to "All Programs" (or "Programs") then "EA80" and then click the "EA80" icon.




Click an available COM port

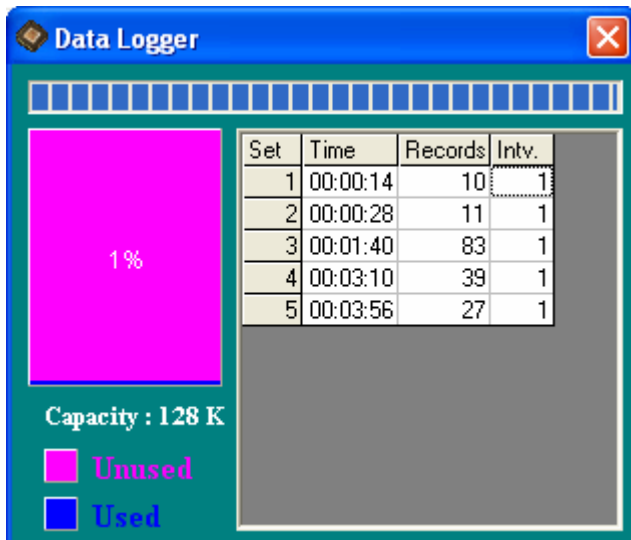


Main software screen

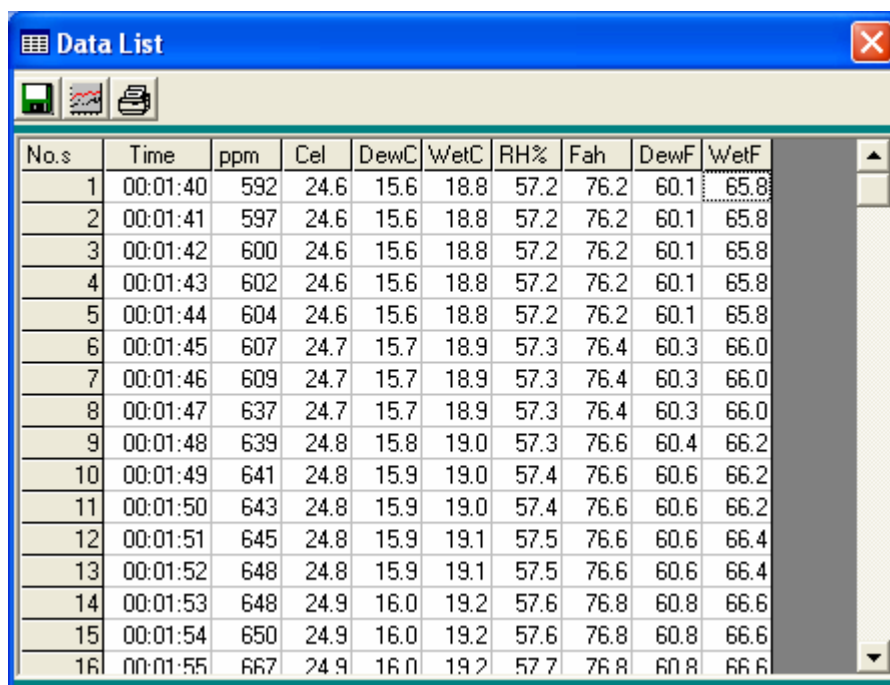


Downloading Logged Data

Push and hold the  button on the meter for about 3 seconds (3 beeps). The Data Logger window, shown below, will open.



Click on a SET number to view the logged data. In the window above, there are 4 sets from which to choose. The list below is an example of an opened set.

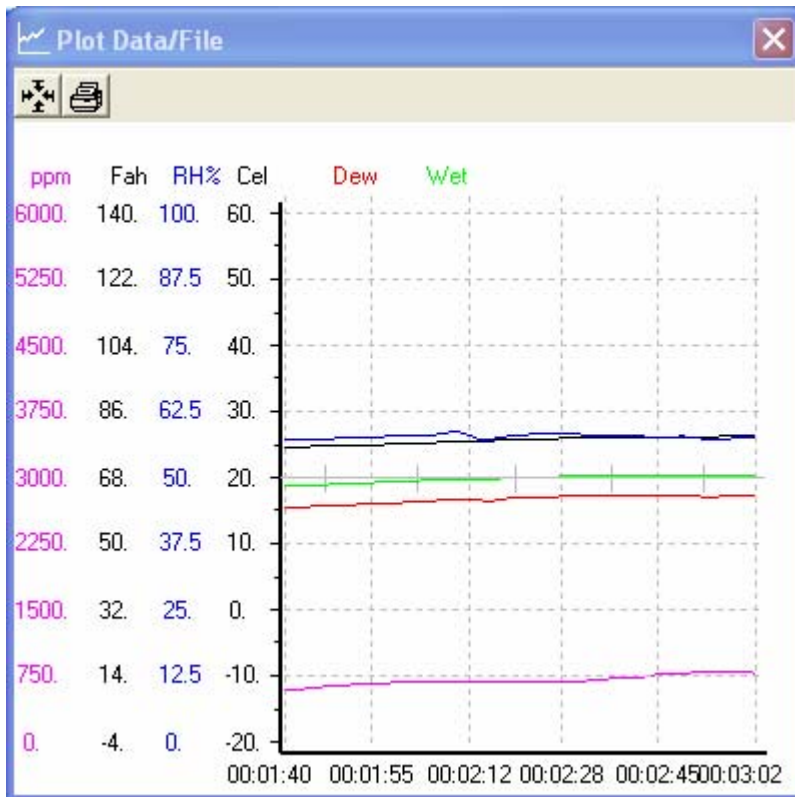



No.s	Time	ppm	Cel	DewC	WetC	RH%	Fah	DewF	WetF
1	00:01:40	592	24.6	15.6	18.8	57.2	76.2	60.1	65.8
2	00:01:41	597	24.6	15.6	18.8	57.2	76.2	60.1	65.8
3	00:01:42	600	24.6	15.6	18.8	57.2	76.2	60.1	65.8
4	00:01:43	602	24.6	15.6	18.8	57.2	76.2	60.1	65.8
5	00:01:44	604	24.6	15.6	18.8	57.2	76.2	60.1	65.8
6	00:01:45	607	24.7	15.7	18.9	57.3	76.4	60.3	66.0
7	00:01:46	609	24.7	15.7	18.9	57.3	76.4	60.3	66.0
8	00:01:47	637	24.7	15.7	18.9	57.3	76.4	60.3	66.0
9	00:01:48	639	24.8	15.8	19.0	57.3	76.6	60.4	66.2
10	00:01:49	641	24.8	15.9	19.0	57.4	76.6	60.6	66.2
11	00:01:50	643	24.8	15.9	19.0	57.4	76.6	60.6	66.2
12	00:01:51	645	24.8	15.9	19.1	57.5	76.6	60.6	66.4
13	00:01:52	648	24.8	15.9	19.1	57.5	76.6	60.6	66.4
14	00:01:53	648	24.9	16.0	19.2	57.6	76.8	60.8	66.6
15	00:01:54	650	24.9	16.0	19.2	57.6	76.8	60.8	66.6
16	00:01:55	667	24.9	16.0	19.2	57.7	76.8	60.8	66.6

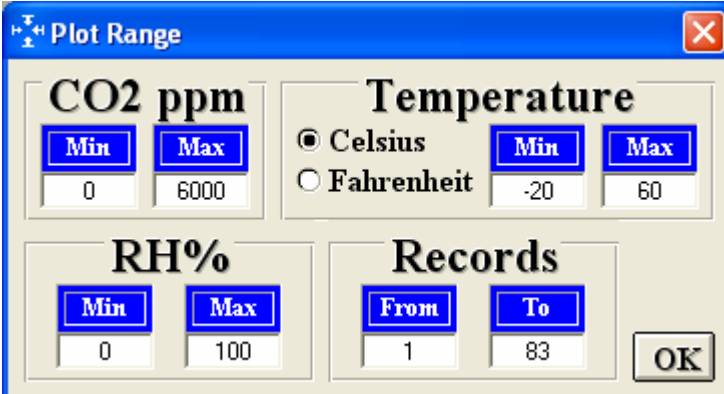
Click  to save.

Graphing Data

Click  to graph. Graph Appears



Click  to edit plot ranges.



The 'Plot Range' dialog box allows users to configure the following settings:

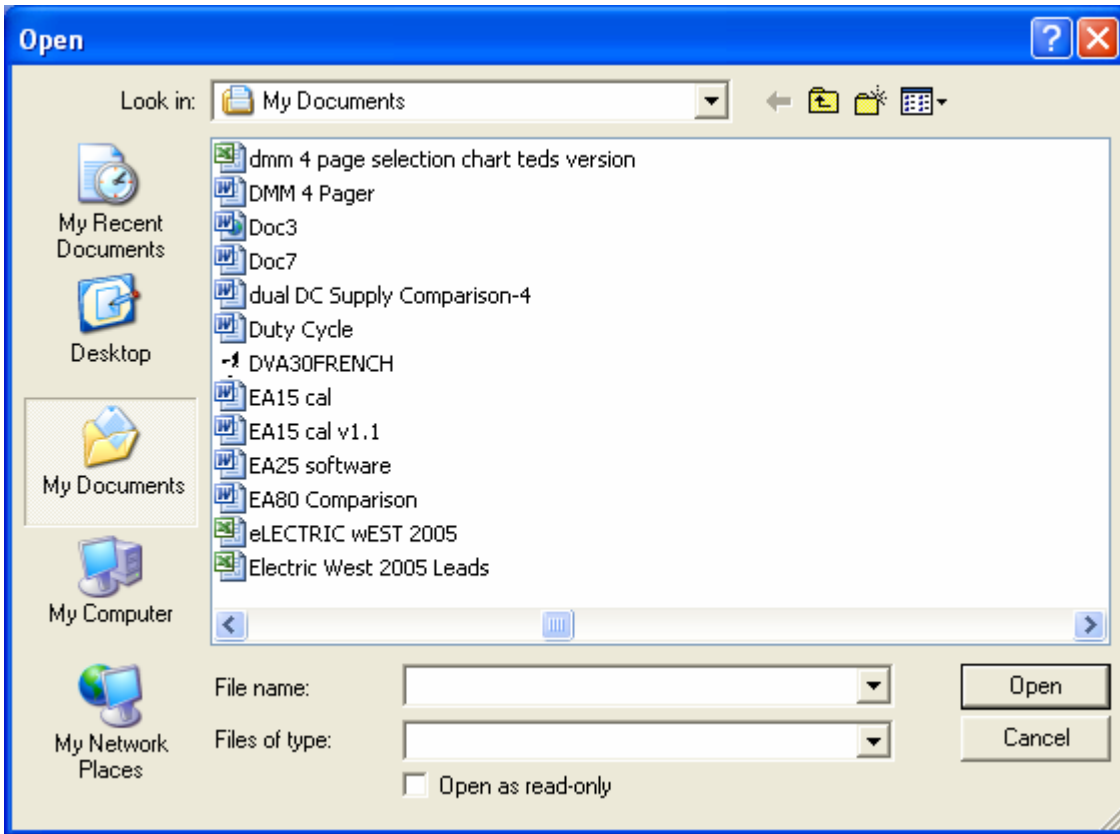
- CO2 ppm:** Min (0), Max (6000)
- Temperature:** Celsius (Min: -20, Max: 60), Fahrenheit
- RH%:** Min (0), Max (100)
- Records:** From (1), To (83)
- OK** button

Printing Data

Click  to print.

Opening a Previously Saved File


Click the  button. The Open File window appears

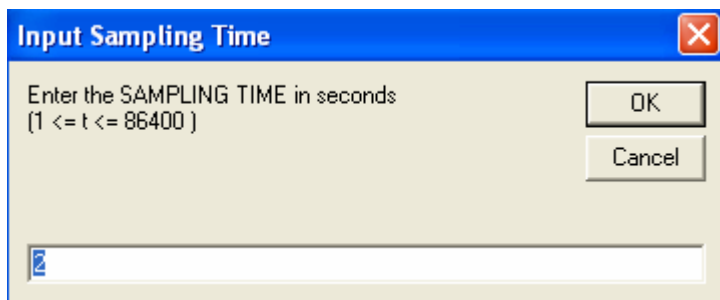


Select the file then click the Open button.

Data Acquisition

In data acquisition mode the meter is connected to a PC.

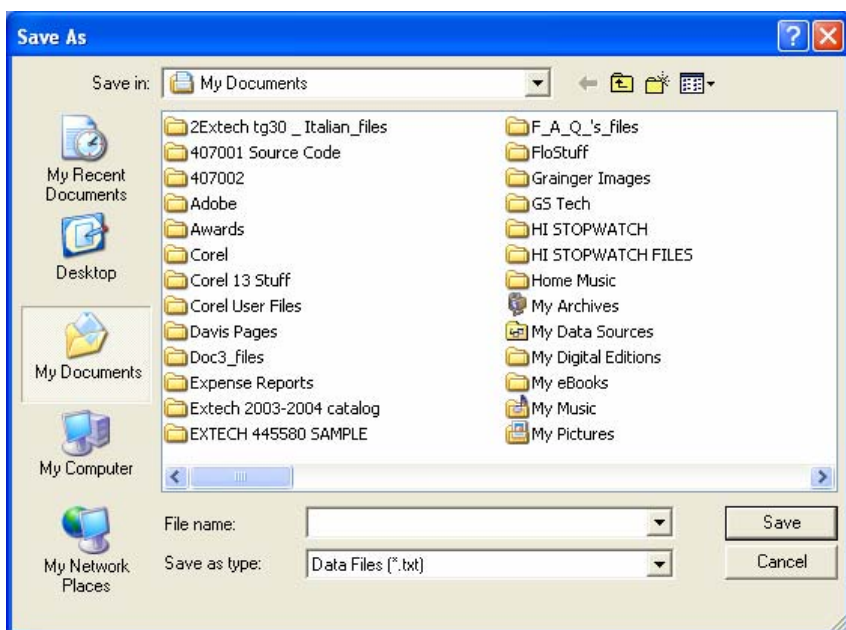
Click  to set the sampling rate.



Enter sampling time and click OK then click on  to view data in table format or  to graph.

Saving A File


Click the  button. The dialog box shown below will appear.

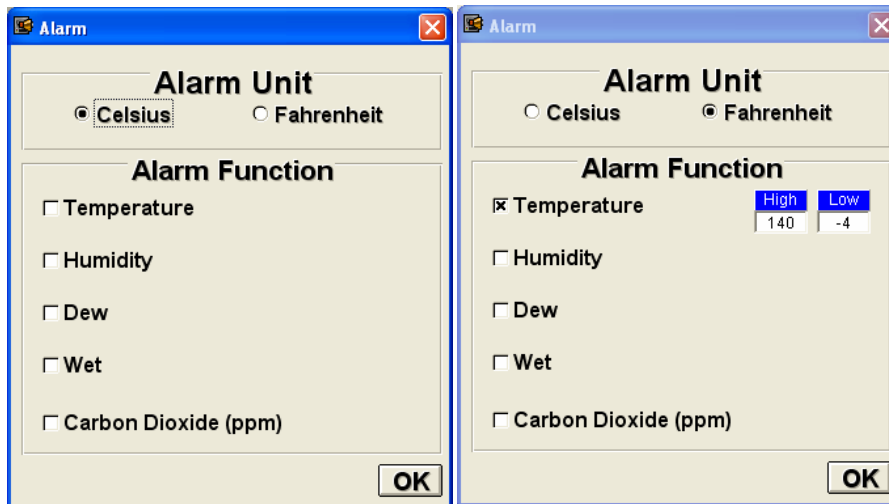


Input a file name and then click "Save" to begin saving data to the file just named.

Click the  button to stop recording.

Alarm Function in Data Acquisition

Click the  button to bring up the alarm menu. Select the desired alarm. Fill in the high and low limits and click OK. Your PC will beep if the levels are exceeded.

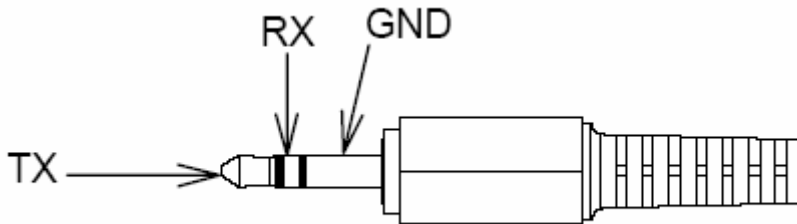


RS232 Wiring Hardware

PC Interface Cable

Meter side of PC Interface Cable

The RS-232 “phono” plug side of the PC Interface Cable connects to the meter’s RS-232 phono jack. Refer to the diagram below for wiring information.



Computer’s Serial Port side of Interface Cable

The RS-232 “DB-9” side of the PC Interface Cable connects to the PC’s COM port. Refer to the diagram below for wiring information. Note that a SERIAL to USB Adapter may be used.



RS232 Settings

28800, N, 8, 1

RS232 Protocol

02	Flag	ppm	H	ppm	L	RH	H	RH	L	Cel	H	Cel	L	03
----	------	-----	---	-----	---	----	---	----	---	-----	---	-----	---	----

02 : Starting Byte

Flag : (Reserved)

ppm (H, L) : 0~6000

RH (H, L) : 0~100

Celsius (H, L) : -20.0~60.0

03 : LCD Ending Byte

Calibration Used

0	N2_H	N2_L	AIR_H	AIR_L	FF
---	------	------	-------	-------	----

0 : Marking Byte

N2 : SENSER N2 Value

AIR : SENSER CO2 Value

FF : Marking Byte

Baud Rate : 28800 (15 bytes data / 0.25 seconds)

Datalogging : (Maximum: 99 sets)

Head : AA 55 AA 55 AA 55 AA 55 AA 55 AA +Total Set+ Last Add+Any command

Records of 1st set+Time+INTV+ Any command...Data...Any command

Records of 2nd set+Time+INTV+ Any command...Data...Any command

After 256 bytes data has been downloaded, the Meter wait for Any command from PC.

.The Last Recorded data...wait for Any command from PC

Hardware Requirements and Setup

PC Hardware Requirements :

HDD, CD Rom, 486 PC or above, with available COM port EGA
or higher monitor
4M bytes or more memory size

PC Hardware Setup :

- 1) Switch off all power related to the PC
- 2) Connect the DB9 (female) end of the supplied RS-232 cable to available COM port
- 3) Switch on all related power
- 4) Connect the phono plug end of the RS232 cable to the meter



Support line (781) 890-7440

Technical support: Extension 200; E-mail:
support@extech.com

Repair & Returns: Extension 210; E-mail:
repair@extech.com

Copyright © 2006 Extech Instruments Corporation.

All rights reserved including the right of reproduction in whole or in part in any form.