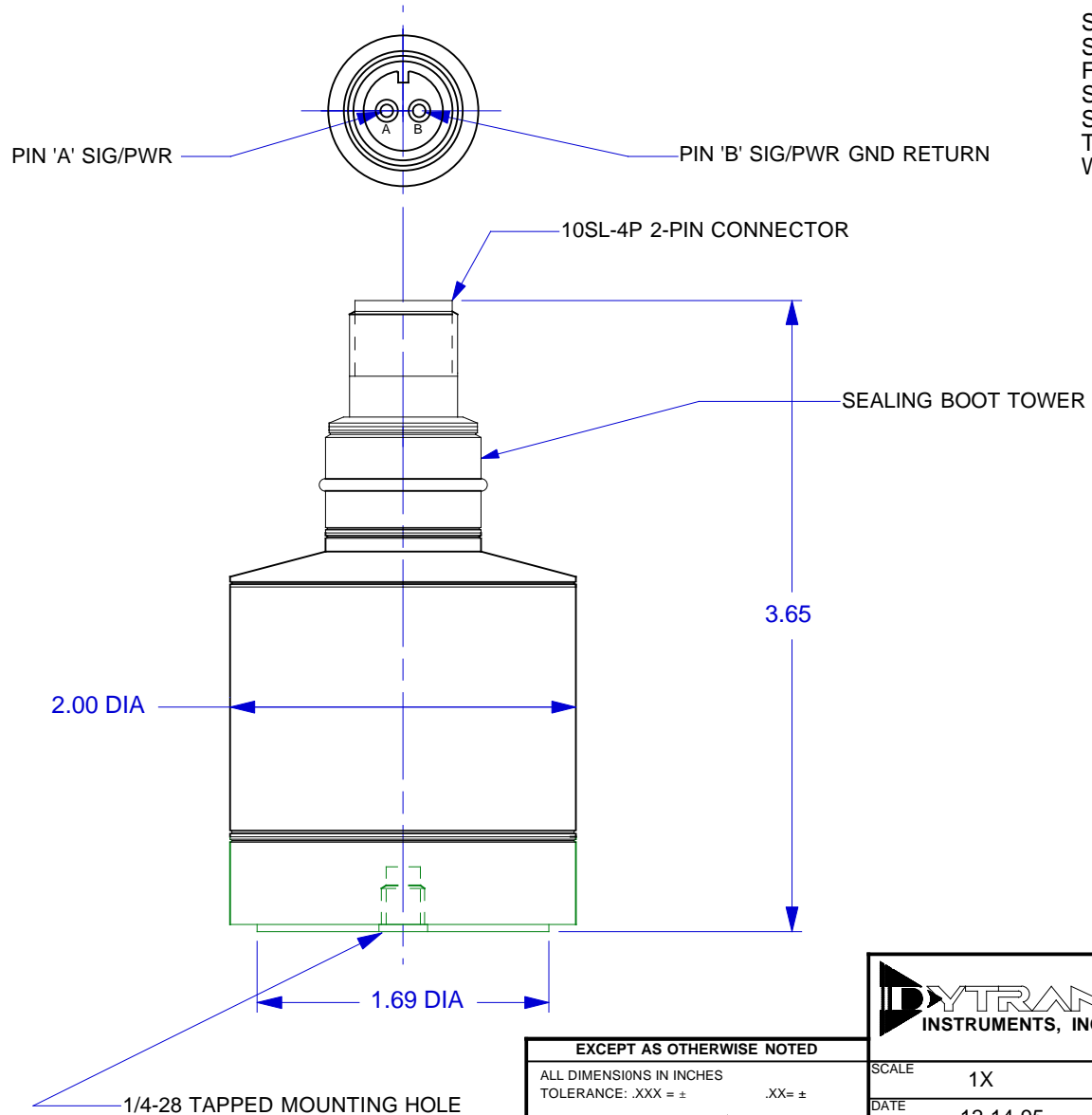


SPECIFICATIONS

| | |
|--------------------------|----------------|
| SENSITIVITY-MODEL 3191A | 5 VOLTS/G |
| SENSITIVITY-MODEL 3191A1 | 10 VOLTS/G |
| FREQUENCY RANGE, +/- 5% | .1 to 1000 Hz |
| SUPPLY CURRENT | 2 to 20 mA |
| SUPPLY VOLTAGE | +18 to +30VDC |
| TEMPERATURE RANGE | -65° to +250°F |
| WEIGHT | 800 GRAMS |



EXCEPT AS OTHERWISE NOTED

ALL DIMENSIONS IN INCHES
TOLERANCE: .XXX = ± .XX = ±

SURFACE FINISH EXCEPT AS NOTED ✓

BREAK EDGES TO DEBURR
RADIUS OR CHAMFER

THESE DIAS ⊙ TO T.I.R.

FILLETS - MAX RAD.

| | | | | | |
|-------------------------------------|----------|-----------------|---|------------------|---|
| DYTRAN INSTRUMENTS, INC. | | CHATSWORTH, CA. | | | |
| SCALE | 1X | REV | - | DATE | - |
| DATE | 12-14-95 | PART NO. | | | |
| DRAWN | N.C. | CHECKED | | MAT'L | |
| APPROVED | | NEXT ASSEMBLY | | USED ON | |
| TITLE | | | | DWG NO. | |
| OUTLINE/INSTALLATION DRAWING | | | | 127-3191A | |
| MODELS 3191A & 3191A1 | | | | SHEET 1 OF 1 | |

SPECIFICATIONS
MODELS 3191A & 3191A1 LIVM SEISMIC ACCELEROMETERS

| SPECIFICATION | VALUE | UNITS |
|---|--------------------------------|------------------|
| PHYSICAL | | |
| WEIGHT | 775 | Grams |
| SIZE, DIA x HEIGHT | 2.00 X 3.65 | Inches |
| MOUNTING PROVISION | 1/4-28 X .250 deep tapped hole | |
| CONNECTOR, TOP MOUNTED | 10SL-4P | 2-pin |
| MATERIAL, BASE, CAP & CONNECTOR | 300 Series | Stainless Steel |
| PERFORMANCE | | |
| SENSITIVITY, MOD 3191A [1] | 5.00 | V/g |
| SENSITIVITY, MOD 3191A1 [1] | 10.00 | V/g |
| RANGE F.S. FOR +/- 5 VOLTS OUTPUT, MOD 3191A | +/- 1.0 | g's |
| RANGE FOR +/- 5 VOLTS OUTPUT, MOD 3191A1 | +/- 0.5 | g's |
| FREQUENCY RANGE, +/- 5% | 0.1 to 1000 | Hz |
| RESONANT FREQUENCY, NOM. | 8 | kHz |
| EQUIVALENT ELECTRICAL NOISE FLOOR | .00007 | g's RMS |
| LINEARITY [2] | +/- 2% | % F.S. |
| TRANSVERSE SENSITIVITY, MAX. | 5 | % |
| STRAIN SENSITIVITY | .001 | g's/μ @ 250 μ |
| ENVIRONMENTAL | | |
| MAXIMUM VIBRATION/SHOCK | 50/100 | ± g's/g's PEAK |
| TEMPERATURE RANGE | -60 to +250 | °F |
| SEAL, HERMETIC | Glass-to-metal and TIG welded | |
| COEFFICIENT OF THERMAL SENSITIVITY | .03 | %/°F |
| ELECTRICAL | | |
| SUPPLY CURRENT/COMPLIANCE VOLTAGE RANGE [3] | 2 to 20/+18 to +30 | mA/Volts |
| OUTPUT IMPEDANCE, TYP. | 100 | Ohms |
| BIAS VOLTAGE, +10 VOLTS NOM. | +9 to +12 | VDC |
| DISCHARGE TIME CONSTANT, MIN. | 4.8 | Sec |
| OUTPUT SIGNAL POLARITY FOR ACCELERATION TOWARD TOP | | Positive |
| ELECTRICAL ISOLATION, CASE GROUND TO MOUNTING SURFACE | | 10 Megohms, min. |

Accessories supplied: (1) Model 6176 mounting stud.

[1] Measured at 100 Hz, 1g RMS (or .5g RMS) per ISA RP 37.2.

[2] Measured using zero-based best straight line method, % of F.S. or any lesser range.

[3] Do not apply power to this device without current limiting, 20 mA MAX. To do so will destroy the integral IC amplifier.