



## B-Series InfraRed Cameras



**For non-invasive monitoring and diagnosing of building conditions**

Providing immediate high resolution visual and thermal imagery, revealing potential structural and moisture issues, energy efficiency and even rodent or pest discovery

### Features:

- Instant imaging of entire room to reveal wet conditions behind surfaces, such as enameled walls and wallpaper and even in places where moisture meters can't reach
- Insulation Alarm easily detects areas that don't fulfill the insulation requirements
- Dew Point Alarm displays areas with risk of surface condensation where mold growth could occur
- High quality 200 x 150 IR resolution
- 2% measurement accuracy — critical for condition monitoring of thermally sensitive targets
- Integral 1280 x 1024 (1.3 Mega Pixel) visible light camera with 1000 cd lamp for quality visible images
- On-camera Picture in Picture (PIP) image fusion capability to see a scalable infrared light image super-imposed in a visible light image
- 3.5" touch-screen LCD
- Thumbnail image gallery helps you to quickly review and find your infrared images
- 1X-2X continuous zoom with auto/manual focus and optional interchangeable lenses for greater versatility

- >4 hour continuous operation on a single charge for uninterrupted inspections
- Built-in Laser LocatIR™ pointer quickly helps you associate the hot spot on the IR image with the real physical target which greatly enhances the ability to target inconsistencies
- SD memory card stores up to 1000 Radiometric JPEG format images. Each image can be analyzed using the included QuickReport™ PC Software
- Complete with SD Memory Card, Li-Ion rechargeable battery with 100-260V AC adaptor/charger, 2-bay battery charger, QuickReport software with USB Mini-B cable, video cable, sun shield, stylus pen & headset (T250), camera lens cap and transport case

### FLIR B250 Additional Features

- Voice comment recording
- Text from touch screen
- Image marker allows sketching on the screen



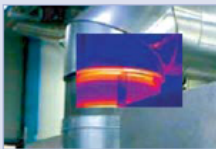
A 120° tiltability of the lens unit allows comfortable use in all situations, anywhere and from any perspective



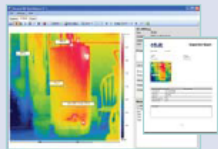
Multifunction Touch Screen allows quick and easy camera software menu handling



Touch Screen Drawing feature for Model B250 allows sketching and marking directly on the screen



Fusion - Picture in Picture (PIP) feature displays visual and thermal images simultaneously



QuickReport PC software enables user to analyze Temperature of all thermal pixels of any FLIR Camera JPEG images



Features	
Temperature range	-4°F to 248°F (-20°C to 120°C)
Image Storage	1000 Images (SD card memory)
Imaging Performance / Image Presentation	
Field of view/min focus distance	25° X 19°/1.31ft (0.4m)
Focus	Manual/Automatic
Thermal sensitivity (N.E.T.D)	<0.08°C at 30°C (B200); <0.07°C at 30°C (B250)
Detector Type	Focal plane array (FPA) uncooled microbolometer; 200 X 150 pixels
Spectral range	7.5 to 13µm
Display	Built-in touch-screen 3.5" color LCD
Image modes	Thermal/Visual/Picture in Picture
Image annotation (T250 only)	Voice (60 sec); text from list, Sketch, image markers on IR/Visual
Laser Classification/Type	Class 2/Semiconductor AlGaInP Diode Laser: 1mW/635nm (red)
Set-up controls	Mode selector, color palettes, configure info to be shown in image, local adaptation of units, language, date and time formats, and image gallery
Measurement modes	5 Spotmeters, 5 Box areas, Isotherm, Auto hot/cold spot
Measurement correction	Reflected ambient temperature & emissivity correction
Power Source / Environmental Specs	
Battery Type	Li-Ion
Battery operating time	>4 hours, Display shows battery status
Charging system	In camera AC adapter/2 bay charging system
AC operation	AC adaptor 90-260VAC, 50/60Hz
Adaptor Voltage	12 VDC output to camera
Operating temperature range	5°F to 122°F (-15°C to 50°C)
Storage temperature range	-40°F to 158°F (-40°C to 70°C)
Humidity	Operating and storage 10% to 95%, non-condensing, IEC 359
Shock	25G, IEC 68-2-29
Vibration	2G, IEC 68-2-6
Dimensions/Weight	4.2x7.9x4.9" (106x201x125mm)/1.94lbs (0.88kg), including battery

### Ordering Information:

- FLIR B200 .....InfraRed Camera
- FLIR B250 .....InfraRed Camera with Voice & Image Marker/Sketch

#### ACCESSORIES

- 1196398 .....Li-Ion Rechargeable Battery
- 1910399 .....AC Adapter Charger (110-240V, U.S. Plug)
- 1910490 .....Cigarette Lighter Adapter Kit, 12VDC (1.2m cable)
- 1196474 .....2-Bay Battery Charger including Power Supply (U.S. plug)
- 1196960 .....Lens f=10mm 45° with case
- 1196961 .....Lens f=30mm 15° with case
- 1124544 .....Neck Strap
- 1124545 .....Camera Pouch
- ITC LEVEL 1 ..ITC Level I Certification Training per attendee

RELIABILITY DIRECT, INC.

2911 S. Shore Blvd., Suite 170 League City, TX USA 77573 Tel: 281.957.5283 Fax: 281.334.4255

