

SKF Endoscope TKES 1

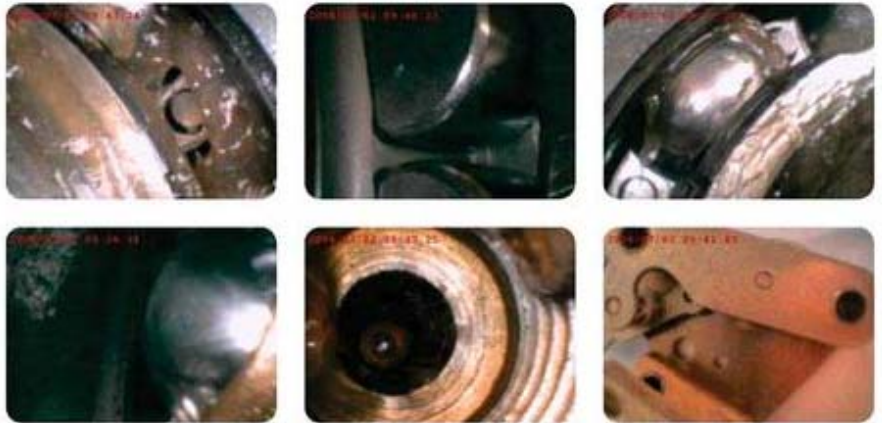
Fast and easy inspection with video function

The SKF Endoscope TKES 1 is a compact handheld instrument that allows the user to view applications in restricted spaces that could not normally be seen with the naked eye. The display unit with a 3.5" TFT LCD screen has the capacity of viewing, storing and reviewing still and video images. Images can also be displayed directly on a TV screen or stored and transferred to a PC for viewing later.

The flexible insertion tube uses a miniature camera, equipped with powerful variable LED lighting, to provide the screen image. The TKES 1 can be used as a first line inspection tool and save time and money by reducing the need to disassemble items for inspection.

- Compact, palm sized endoscope allows true portability
- Easy to assemble and use, no special training required
- Advanced high quality optics gives an excellent full screen image and good resolution compared to fibre optic type endoscopes
- The 3.5" extra-wide view angle and clear TFT monitor, protected by oil and scratch resistant tempered glass allows for easy viewing of photos and videos and helps image interpretation
- Fully flexible 1 metre (3.3 ft) insertion tube with a small tip diameter of 5,5 mm allows easy access to most applications
- The 1 GB SD memory card provided can store up to 30 000 photos or 4-5 hours of video. This is more than enough for almost any user
- Photos and videos can be transferred to PC using the USB cable provided. No special software required for most MS Windows® operating systems
- Built-in step-less adjustable LED lighting helps prevent under and over illumination of target
- Water resistant flexible tube can be used in applications where moisture is present
- 67 ° field of view offers an excellent viewing range for restricted space applications
- Supplied with right-angle side view adapter
- Multilingual menu on display unit
- Supplied complete with all necessary cables, universal mains charger and carrying case





Technical data

Designation	TKES 1
Insertion tube and light source	
Image sensor	CMOS Image Sensor
Resolution (dynamic / static)	320(H)*240(V) / 640(H)*480(V)
Size tip (insertion tube) diameter	5,5 mm (0.22 in)
Tube length	1 m (39.4 in)
Field of View (FOV)	67°
Depth of Field (DOF)	1,5 cm – 10 cm (0.6 – 4 in)
Light source	4 White LED (0-275 Lux/4 cm)
Probe working temperature	-20 to 70 °C (-5 to 158 °F)
Ingress protection level	IP 57 5...Protected against dust-limited ingress (no harmful deposit). 7...Protected against the effect of immersion between 15 cm and 1m.
Display unit	
Power	DC5V
Display	3.5" TFT LCD Monitor 320*240 Pixels
Interface	Mini usb 1.1/ AV out / AV in/
Battery (not user serviceable)	Rechargeable Li-Polymer Battery (3.7V), Typically 4 hours operation after a 2 hour charge.
Video out format	NTSC & PAL
Recording medium	SD card 1 GB supplied – storage capacity ± 30 000 photos, or 4–5 hours video. (SD Cards up to 2 GB can be used)
Still image/video recording format	JPEG (640*480)/ ASF (320*240)
Working and storage/ battery charging temperature range	-20 to 60 °C/0 to 40 °C (-4 to 140 °F/32 to 104 °F)
Functions	Snapshot, video recording, picture and video review on LCD screen, TV Out, transfer of picture and video from SD card to PC
Weights and dimensions (complete case)	2,8 kg / 44 x 32 x 8 cm (6,2 lbs / 17.4 x 12.5 x 3.2 in)

www.reliabilitydirectstore.com

2911 South Shore Blvd. Suite 170, League City, TX USA 77573 Phone: 281-957-5283 Fax: 281-334-4255