



**“Your Direct Source for Condition Monitoring, Test & Measurement”**

[www.ReliabilityDirectStore.com](http://www.ReliabilityDirectStore.com)

2911 South Shore Blvd. Suite 170, League City, TX USA 77573 Phone: 281-957-5283 Fax: 281-334-4255

**EXTECH**<sup>®</sup>  
INSTRUMENTS  
A FLIR COMPANY

Experience the **Extech**  
**Advantage**

PRODUCT DATASHEET

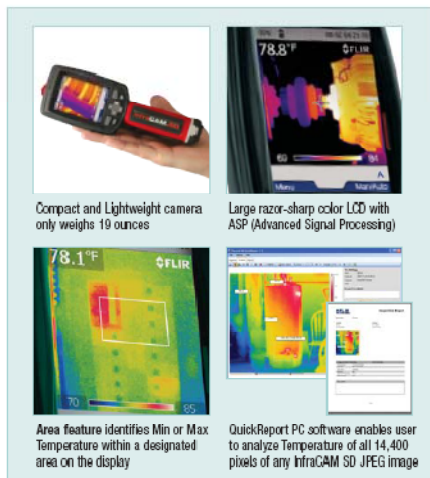
## InfraCAM™ SD Thermal Imaging InfraRed Camera

### Lightweight and Easy-to-Use

Compact size camera weighs only 19 ounces offering Professional performance, high accuracy, high resolution, and 1000 image SD card storage

#### Features:

- High accuracy of 2% and thermal sensitivity better than 0.1°C helps you find problems faster and easier — critical when measuring threshold values of thermally sensitive equipment
- Lightweight and compact size results in less user fatigue
- Long Battery Life lasts for 7 hours of continuous operation on a single charge for uninterrupted inspections
- Large 3.5" (89mm) color LCD with razor-sharp resolution
- Rugged meter with easy grip handle construction meets IP54 dust/splashproof standards
- The built-in Laser LocatIR™ pointer quickly helps you associate the hot spot on the IR image with the real physical target which greatly enhances the ability to target inconsistencies
- Standard 128MB SD card stores up to 1000 Radiometric JPEG images. All 14,400 thermal pixels of each image can be analyzed using the included QuickReport™ PC Software
- Complete with 128MB SD Card, Li-Ion rechargeable battery with 100-260V AC adaptor/charger, QuickReport software with USB cable, lens cap, hand strap, and heavy duty case



Features	
Temperature range	14°F to 662°F (-10°C to 350°C)
Image Storage	1000 Images (SD card memory)
Emissivity	0.1 to 1.0 (adjustable)
Imaging Performance / Image Presentation	
Field of view/min focus distance	25° X 25°/0.3m
Thermal sensitivity (N.E.T.D)	<0.1°C at 25°C
Detector Type	Focal plane array (FPA) uncooled microbolometer; 120 X 120 pixels
Spectral range	7.5 to 13µm
Display	3.5" color LCD
Video output	MPEG-4 via USB
Image Controls	Palettes (Iron, Rainbow, and Black/White), level, span, auto adjust (continuous/manual)
Set-up controls	Date/time, info, LCD intensity, power down, and 16 languages
Laser Classification	Class 2
Laser Type	Semiconductor AlGaInP Diode Laser: 1mW/635nm (red)
Measurement modes	Spot, Area, Min/Max
Power Source / Environmental Specs	
Battery Type	Li-Ion
Battery operating time	7 hours, Display shows battery status
Charging system	In camera, AC adapter or 12V from car with optional 12V cable
AC operation	AC adapter 90-260VAC, 50/60Hz 12VDC out
Voltage	11-16 VDC
Operating temperature range	5°F to 122°F (-15°C to 50°C)
Storage temperature range	-40°F to 158°F (-40°C to 70°C)
Humidity	Operating and storage 20% to 80%, non-condensing, IEC 359
Shock	25g, IEC 68-2-29
Vibration	2g, IEC 68-2-6
Dimensions/Weight	9.6x3.2x4.1" (243x81x103mm)/<19oz (0.55kg), including battery

#### Ordering Information:

IRC57 .....InfraCAM™ SD Thermal Imaging InfraRed Camera  
 1196390 .....Li-Ion Rechargeable Battery  
 1910399 .....AC Adapter Charger (110-240V, U.S. Plug)  
 1910490 .....Cigarette Lighter Adapter Kit, 12VDC (1.2m cable)  
 1196474 .....2-Bay Battery Charger including Power Supply (U.S. plug)  
 3300149 .....ITC Level I Certification Training per attendee

RELIABILITY DIRECT, INC.

2911 S. Shore Blvd., Suite 170 League City, TX USA 77573 Tel: 281.957.5283 Fax: 281.334.4255

